

**TOMAIA**

- Microfibra idrorepellente

**SUOLA INTERNA**

- Soletta anatomica, estraibile, traspirante e antistatica

**PUNTALE**

- Puntale in composito

**CERTIFICAZIONE CE**

EN ISO 20345:2022

**SUOLA**

- Suola antiscivolo in poliuretano monodensità

**FODERA INTERNA**

- Materiale traspirante

**COLLARINO**

- Imbottito

**LIVELLO DI PROTEZIONE**

S2 FO SR

**COLORE**

000 Nero

**TAGLIE**

35 ÷ 47



**COLORI DISPONIBILI**



000 Nero



Collarino imbottito

**UPPER**

- Water repellent microfiber

**INTERIOR SOLE**

- Anatomical, removable, breathable and anti-static insole

**TOE CAP**

- Composite toe cap

**SOLE**

- Anti-slip single density polyurethane outsole

**INTERNAL LINING**

- Breathable material

**GIRTH**

- Padded

**COLOURS**

000 Black

**SIZES**

35 ÷ 47

**CE CERTIFICATION**

EN ISO 20345:2022

**PROTECTION LEVEL**

S2 FO SR



**AVAILABLE COLOURS**



000 Black

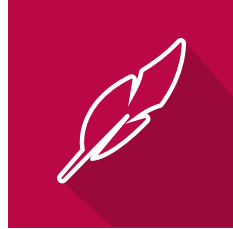


Padded girth

## LEGENDA DELLE ICONE / LEGEND OF ICONS



Assorbimento energia al tallone  
*Energy absorption at heel*



Super leggera e confortevole  
*Super light and comfortable*



Suola resistente agli oli/acidi  
*Oil /acid resistant outsole*



Tomaia in microfibra  
*Microfiber upper*



Suola antiscivolo  
*Non-slip sole*



Protezione dita contro un urto di 200J  
*Toe protection with resistance of 200J*



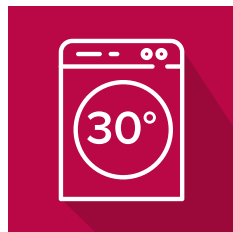
Resistente agli idrocarburi  
*Hydrocarbon resistant*



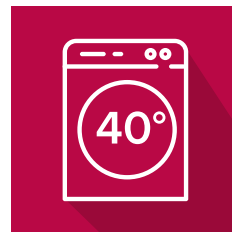
Tomaia resistente all'acqua  
*Water resistant upper*



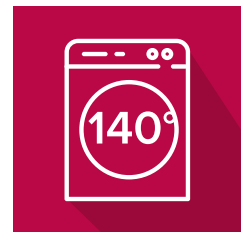
Antistatica  
*Antistatic*



Lavabile a 30°  
*Washable 30°*



Lavabile a 40°  
*Washable 40°*



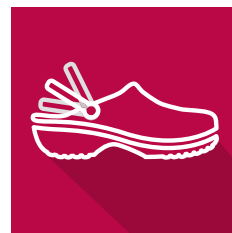
Lavabile a 140°  
*Washable 140°*



Arco della suola con striature  
*Arch with stria*



Suola con rilievi  
*Ribbed sole*



Cinturino mobile  
*Folding heel strap*



Elettrostatico  
*Electrostatic*